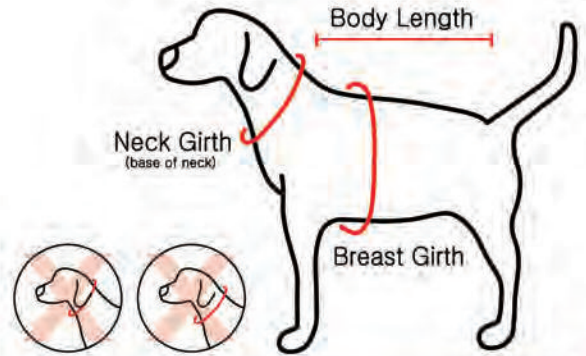


# PUPPIA® STANDARD SIZE MEASUREMENT FOR APPAREL

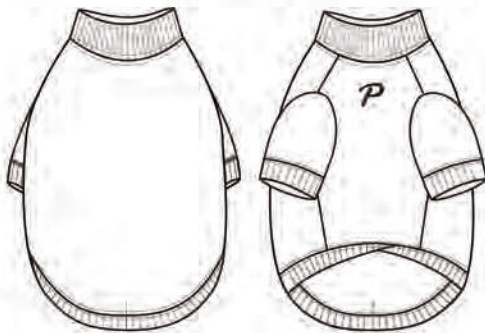


## Recommendation by Dog Size & Breeds

cm (inches)

Size	Neck Girth	Breast Girth	Body Length	Breeds
XS	13 (5.1) – 18 (7.1)	22 (8.7) – 27 (10.6)	13 (5.1) – 17 (6.7)	Smallest Breeds & Puppies
S	18 (7.1) – 23 (9)	28 (11) – 33 (13)	17 (6.7) – 23 (9)	Chihuahua, Miniature Pinscher, Papillon, Pomeranian, etc.
M	23 (9) – 27 (10.6)	34 (13.3) – 40 (15.7)	23 (9) – 28 (11)	Bichon Frise, Maltese, Shih Tzu, Toy Poodle, etc.
L	27 (10.6) – 31 (12.2)	40 (15.7) – 45 (17.7)	28 (11) – 35 (13.8)	Boston Terrier, French Bulldog, Schnauzer, Cocker Spaniel, Fox Terrier, Pug, Pekingese, etc.
XL	31 (12.2) – 35 (13.8)	46 (18.1) – 50 (19.7)	35 (13.8) – 41 (16.1)	Chinese Shar-pei, Golden Retriever, Labrador Retriever, etc.
XXL	35 (13.8) – 39 (15.4)	51 (20) – 59 (23.2)	41 (16.1) – 47 (18.5)	Alaskan Malamute, Coolie, English Pointer, Golden Retriever, Labrador Retriever, etc.
3L	39 (15.4) – 42 (16.5)	60 (23.6) – 69 (27.2)	48 (18.9) – 58 (22.8)	
4L	42 (16.5) – 46 (18.1)	81 (31.9) – 87 (34.3)	58 (22.8) – 63 (24.8)	
5L	47 (18.5) – 50 (19.7)	88 (34.6) – 94 (37)	64 (25.2) – 70 (27.6)	

\* Choose the right size PUPPIA® products based on mainly breast girth. \*\* The following charts show the measurements, based on the standard sizing.



## T-shirts Type

cm (inches)

Size	Neck Girth	Breast Girth	Back Length
XS	17 (6.7) – 19 (7.5)	27 (10.6) – 28 (11)	14 (5.5) – 16 (6.3)
S	21 (8.3) – 22 (8.7)	32 (12.6) – 33 (13)	17 (6.7) – 19 (7.5)
M	24 (9.4) – 26 (10.2)	38 (15) – 39 (15.4)	24 (9.4) – 26 (10.2)
L	28 (11) – 30 (11.8)	44 (17.3) – 45 (17.7)	27 (10.6) – 29 (11.4)
XL	32 (12.6) – 34 (13.4)	48 (18.9) – 50 (19.7)	31 (12.2) – 34 (13.4)
XXL	35 (13.8) – 37 (14.6)	58 (22.8) – 60 (23.6)	36 (14.2) – 39 (15.4)
3L	41 (16.1) – 43 (16.9)	64 (25.2) – 68 (26.8)	42 (16.5) – 46 (18.1)
4L	-	-	-
5L	-	-	-

\* 'Back Length' is measured back part of the Apparel.



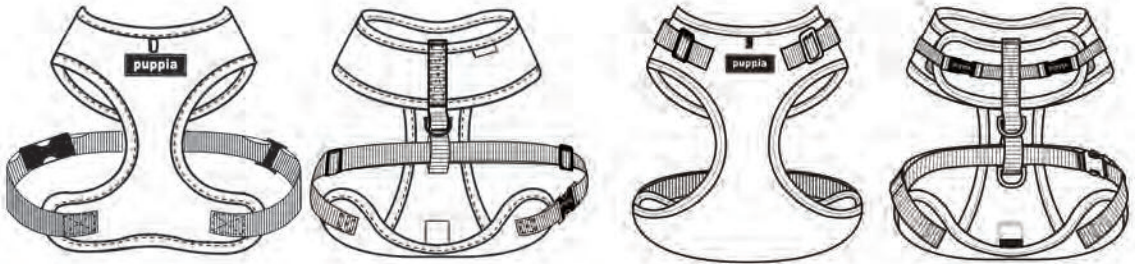
## Jumper Type

cm (inches)

Size	Neck Girth	Breast Girth	Back Length
XS	18 (7.1) – 19 (7.5)	28 (11) – 30 (11.8)	14 (5.5) – 16 (6.3)
S	22 (8.7) – 23 (9)	32 (12.6) – 34 (13.3)	17 (6.7) – 19 (7.5)
M	25 (9.8) – 27 (10.6)	38 (15) – 42 (16.5)	24 (9.4) – 26 (10.2)
L	29 (11.4) – 31 (12.2)	44 (17.3) – 48 (18.9)	27 (10.6) – 29 (11.4)
XL	32 (12.6) – 35 (13.8)	50 (19.7) – 53 (20.9)	32 (12.6) – 35 (13.8)
XXL	37 (14.6) – 40 (15.7)	58 (22.8) – 63 (24.8)	38 (15) – 40 (15.7)
3L	43 (16.9) – 46 (18.1)	66 (26) – 72 (28.3)	44 (17.3) – 47 (18.5)
4L	44 (17.3) – 48 (18.9)	70 (27.6) – 86 (33.9)	59 (23.2) – 60 (23.6)
5L	48 (18.9) – 52 (20.5)	87 (34.2) – 96 (37.8)	61 (24) – 67 (26.4)

\* 'Back Length' is measured back part of the Apparel.

# PUPPIA® STANDARD SIZE MEASUREMENT FOR HARNESSSES



**Harness Type A** cm (inches)

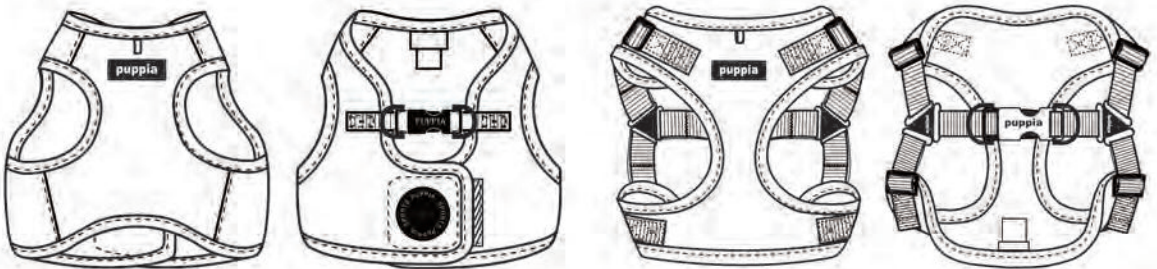
Size	Neck Girth	Breast Girth	Back Length
XS	21(8.3)	24(9.5)–33(13)	9(3.5)
S	26(10.2)	33(13)–49(19.3)	9.5(3.74)
M	32(12.6)	39.5(15.6)–61(24)	11.5(4.5)
L	37(14.6)	50(19.7)–77(30.3)	13(5.1)
XL	41(16.1)	56(22)–83(32.7)	15.5(6.1)
XXL	54(21.2)	69(27.2)–96(37.8)	20.5(8.1)
3L	-	-	-

\* 'Back Length' is measured back part of the harness

**Ritefit Harness®** cm (inches)

Size	Neck Girth	Breast Girth	Back Length
XS	-	-	9(3.5)
S	25(9.8)–28(11)	30(11.8)–43(16.9)	9.5(3.74)
M	31(12.2)–36(14.2)	37(14.5)–53(20.8)	11.5(4.5)
L	34(13.4)–46(18.1)	47(18.5)–66(26)	13(5.1)
XL	43(16.9)–56(22)	56(22)–80(31.5)	15.5(6.1)
XXL	-	-	20.5(8.1)
3L	-	-	-

\* 'Back Length' is measured back part of the harness



**Harness Type B** cm (inches)

Size	Neck Girth	Breast Girth	Back Length
XS	23(9)	24(9.4)–26(10.2)	5(2)
S	26(10.2)	30(11.8)–32(12.6)	5.3(2.1)
M	29(11.4)	37(14.6)–39(15.4)	6.8(2.7)
L	34(13.4)	43(16.9)–45(17.7)	7.3(2.9)
XL	39(15.4)	49(19.2)–51(20)	8.8(3.5)
XXL	46(18.1)	57(22.4)–59(23.2)	10.5(4.1)
3L	53(20.9)	71(28)–73(28.7)	11.8(4.6)

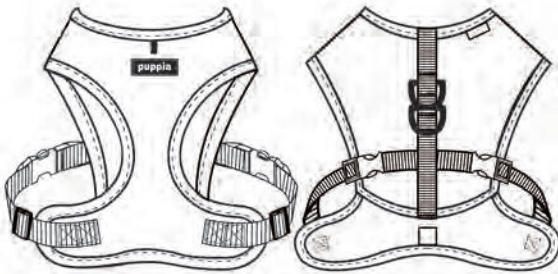
\* 'Back Length' is measured back part of the harness

**Harness Type C** cm (inches)

Size	Neck Girth	Breast Girth	Back Length
XS	23(9)	24(9.4)–26(10.2)	5(2)
S	26(10.2)	30(11.8)–32(12.6)	5.3(2.1)
M	29(11.4)	37(14.6)–39(15.4)	6.8(2.7)
L	34(13.4)	43(16.9)–45(17.7)	7.3(2.9)
XL	39(15.4)	49(19.2)–51(20)	8.8(3.5)
XXL	46(18.1)	57(22.4)–59(23.2)	10.5(4.1)
3L	53(20.9)	71(28)–73(28.7)	11.8(4.6)

\* 'Back Length' is measured back part of the harness

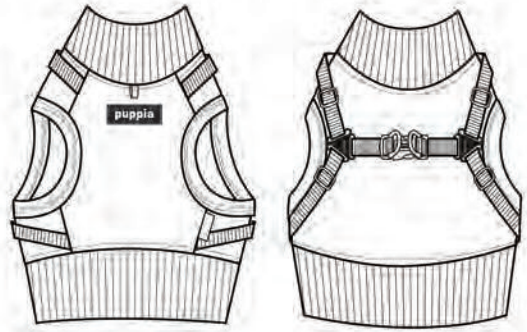




**Harness Type E** cm (inches)

Size	Neck Girth	Breast Girth	Back Length
XS	-	-	-
S	28 (11)	32 (12.6) - 38 (14.9)	10 (3.9)
M	34 (13.4)	41 (16.1) - 52 (20.5)	12.5 (4.9)
L	38 (14.9)	48 (18.9) - 58 (22.8)	15 (5.9)
XL	42 (16.5)	62 (24.4) - 80 (31.5)	16.5 (6.5)
XXL	-	-	-
3L	-	-	-

\* 'Back Length' is measured back part of the harness



**Harness Type J** cm (inches)

Size	Neck Girth	Breast Girth	Back Length
XS	-	-	-
S	21 (8.3)	31 (12.2)	14 (5.5)
M	24 (9.5)	37 (14.6)	16.5 (6.5)
L	29 (11.4)	43 (16.9)	19.5 (7.7)
XL	33 (13)	48 (18.9)	22 (8.7)
XXL	-	-	-
3L	-	-	-

\* 'Back Length' is measured back part of the harness



**Harness Type X** cm (inches)

Size	Neck Girth	Breast Girth
XS	-	-
S	28 (11) - 30 (11.8)	27 (10.6) - 36 (14.2)
M	34 (13.4) - 42 (16.5)	30 (11.8) - 46 (18.1)
L	44 (17.3) - 54 (21.2)	40 (15.7) - 58 (22.8)
XL	50 (19.7) - 64 (25.2)	60 (23.6) - 66 (26)
XXL	-	-
3L	-	-



**Lead** cm (inches)

Style	Size	Width	Length
TWO TONE LEAD (PDCF-AL30)	S	1 (0.4)	116 (45.7)
	M	1.5 (0.6)	120 (47.2)
	L	2 (0.8)	145 (57.1)
2020 SS -	M	1.5 (0.6)	200 (78.7)
	L	2 (0.8)	200 (78.7)
- 2019 FW	M	1.5 (0.6)	140 (55.1)
	L	2 (0.8)	140 (55.1)